

PLAT NO. 7 QUAIL RIDGE

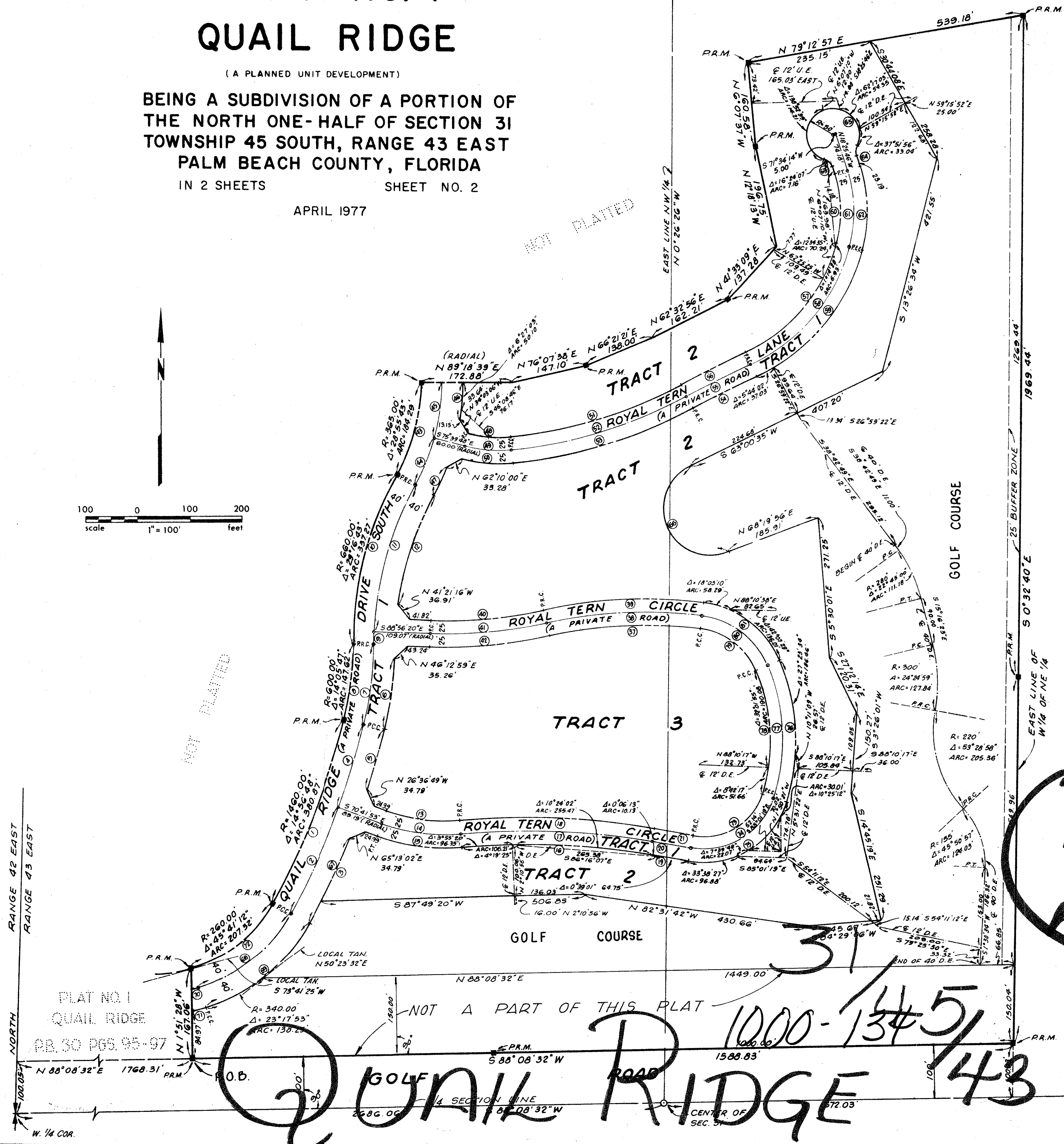
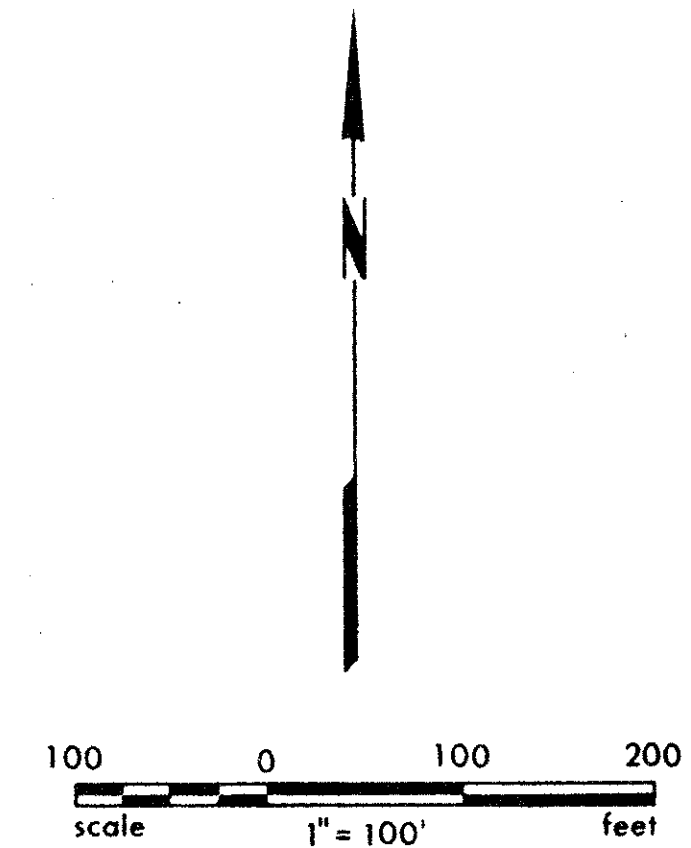
(A PLANNED UNIT DEVELOPMENT)

BEING A SUBDIVISION OF A PORTION OF
THE NORTH ONE-HALF OF SECTION 31
TOWNSHIP 45 SOUTH, RANGE 43 EAST
PALM BEACH COUNTY, FLORIDA

IN 2 SHEETS SHEET NO. 2

APRIL 1977

	RADIUS	CENTRAL ANGLE	ARC	TAN.
1.	1460.00'	14°-56'-48"	380.87'	191.52'
2.	1500.00'	8°-42'-07"	227.82'	114.13'
3.	1540.00'	4°-52'-23"	130.98'	65.53'
4.	1500.00'	6°-14'-41"	163.48'	81.82'
5.	1540.00'	4°-24'-50"	118.64'	59.35'
6.	680.00'	11°-41'-08"	138.69'	69.58'
7.	640.00'	14°-05'-47"	157.46'	79.13'
8.	600.00'	15°-05'-47"	147.62'	74.18'
9.	620.00'	15°-06'-02"	22.73'	11.37'
10.	660.00'	29°-16'-43"	337.27'	172.40'
11.	620.00'	27°-10'-41"	294.10'	149.87'
12.	580.00'	22°-00'-34"	222.80'	112.79'
13.	325.00'	25°-17'-49"	143.49'	72.94'
14.	350.00'	25°-17'-49"	154.53'	78.54'
15.	375.00'	25°-17'-49"	165.57'	84.16'
16.	1407.39'	14°-43'-27"	361.68'	181.84'
17.	1432.39'	14°-43'-27"	368.10'	185.07'
18.	1457.39'	14°-43'-27"	374.53'	188.30'
19.	5704.58'	0°-45'-14"	75.06'	37.53'
20.	5729.58'	0°-45'-14"	75.39'	37.70'
21.	5754.58'	0°-45'-14"	75.72'	37.86'
36.	125.00'	66°-12'-36"	144.45'	81.50'
37.	856.47'	19°-25'-20"	290.33'	146.57'
38.	881.47'	19°-25'-20"	298.80'	150.85'
39.	906.47'	19°-25'-20"	307.28'	155.13'
40.	856.47'	14°-32'-34"	217.38'	109.28'
41.	881.47'	14°-32'-34"	223.74'	112.47'
42.	906.47'	14°-32'-34"	230.08'	115.66'
43.	365.00'	28°-55'-43"	184.29'	94.15'
44.	405.00'	13°-54'-10"	98.27'	49.38'
45.	405.00'	15°-01'-33"	106.21'	53.41'
46.	445.00'	8°-55'-03"	69.26'	34.70'
47.	445.00'	7°-47'-49"	60.56'	30.32'
48.	225.00'	20°-05'-21"	78.89'	39.85'
49.	250.00'	20°-45'-26"	90.57'	45.79'
50.	275.00'	20°-18'-41"	97.49'	49.26'
51.	865.00'	22°-42'-50"	342.91'	173.74'
52.	890.00'	22°-42'-50"	352.83'	178.76'
53.	915.00'	22°-42'-50"	362.74'	183.78'
54.	2275.00'	3°-26'-31"	136.67'	68.35'
55.	2300.00'	3°-26'-31"	138.17'	69.10'
56.	2325.00'	3°-26'-31"	139.67'	69.86'
57.	320.00'	50°-31'-38"	282.20'	151.02'
58.	345.00'	50°-31'-38"	304.24'	162.81'
59.	370.00'	50°-31'-38"	326.29'	174.61'
60.	235.00'	32°-12'-35"	132.11'	67.85'
61.	260.00'	32°-12'-35"	146.16'	75.07'
62.	285.00'	32°-12'-35"	160.22'	82.29'
63.	25.00'	53°-07'-48"	23.18'	12.50'
64.	25.00'	42°-50'-00"	18.69'	9.81'
65.	50.00'	275°-57'-48"	240.82'	-
66.	90.00'	174°-40'-39"	274.38'	-
67.	1540.00'	6°-52'-16"	184.68'	92.45'
68.	300.00'	45°-41'-12"	239.21'	126.38'
69.	340.00'	45°-41'-12"	271.11'	143.23'
70.	375.00'	1°-34'-11"	10.27'	5.14'
71.	415.00'	2°-49'-47"	20.50'	10.25'
72.	260.00'	45°-41'-12"	207.32'	109.52'
73.	115.00'	82°-37'-43"	165.85'	101.08'
74.	140.00'	82°-37'-43"	201.90'	123.06'
75.	165.00'	82°-37'-43"	237.95'	145.03'
76.	390.00'	40°-44'-12"	277.29'	144.79'
77.	365.00'	40°-44'-12"	259.51'	135.51'
78.	340.00'	40°-44'-12"	241.74'	126.23'
79.	135.00'	60°-10'-38"	141.79'	78.22'
80.	160.00'	60°-10'-38"	168.05'	92.71'
81.	185.00'	60°-10'-38"	194.30'	107.19'



NOTES:
 ■ = PERMANENT REFERENCE MONUMENT (P.R.M.)
 ○ = PERMANENT CONTROL POINT (P.C.P.)
 D.E. = DRAINAGE EASEMENT
 U.E. = UTILITY EASEMENT

MINIMUM SETBACK REQUIREMENTS
 FRONT 25 FEET
 SIDE (interior) 15 FEET
 SIDE (corner) 25 FEET
 REAR 25 FEET

AREA TRACT 1 = 6.028 ACRES
 AREA TRACT 2 = 13.694 ACRES
 AREA TRACT 3 = 5.919 ACRES
 AREA GOLF COURSE = 16.851 ACRES
 TOTAL AREA = 42.492 ACRES
 TOTAL DWELLING UNITS = 77
 DENSITY = 1.81 D.U. PER GROSS ACRE

PLAT NO. 1
 QUAIL RIDGE
 PB. 30 PGS. 95-97

NOT A PART OF THIS PLAT

20
 1000-1345
 43
 44